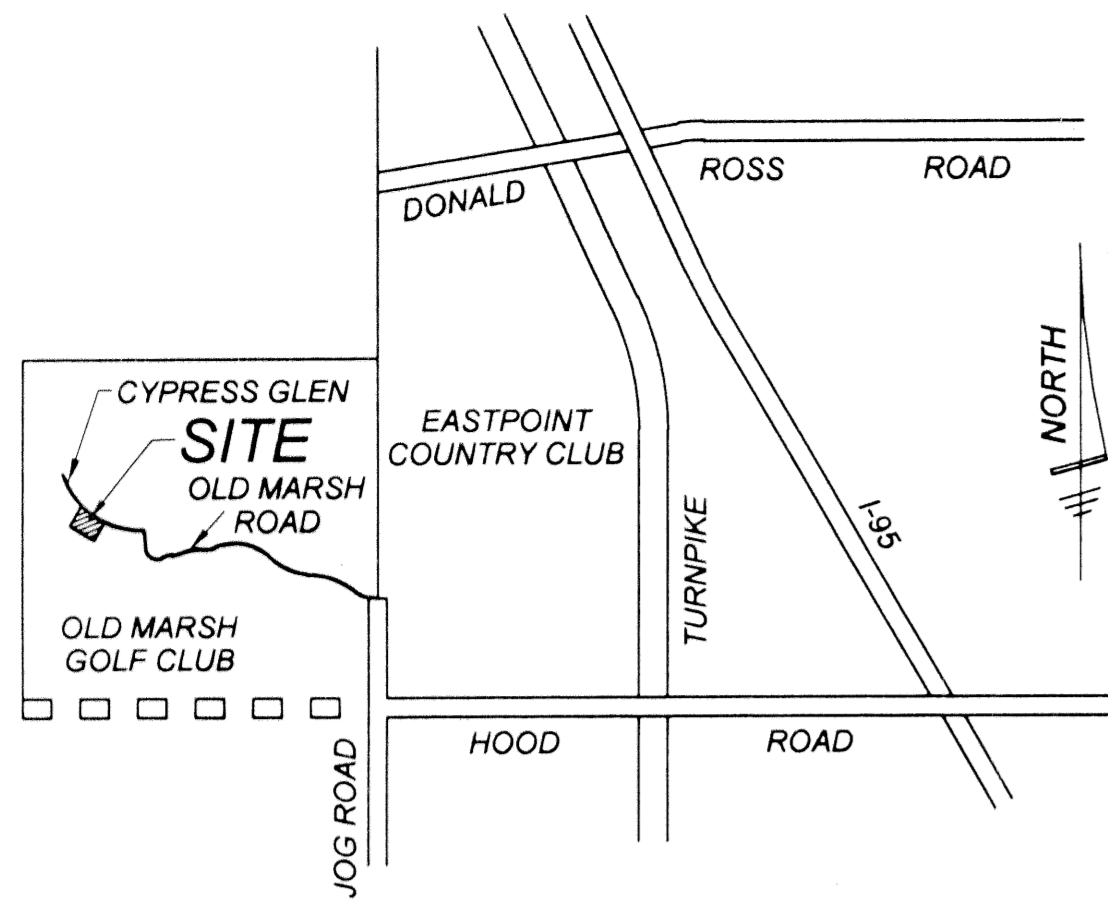


# OLD MARSH GOLF CLUB REPLAT No. 7 (a P.U.D.)

BEING A REPLAT OF LOT 178, OLD MARSH GOLF CLUB (a P.U.D.), ACCORDING TO THE PLAT THEREOF, RECORDED IN PLAT BOOK 58, PAGE 62 AND LOT A, OLD MARSH GOLF CLUB MINOR REPLAT, ACCORDING TO THE PLAT THEREOF, RECORDED IN PLAT BOOK 85, PAGE 191, PUBLIC RECORDS OF PALM BEACH COUNTY, FLORIDA, LYING IN SECTION 28, TOWNSHIP 41 SOUTH, RANGE 42 EAST, PALM BEACH COUNTY, FLORIDA  
APRIL, 2000

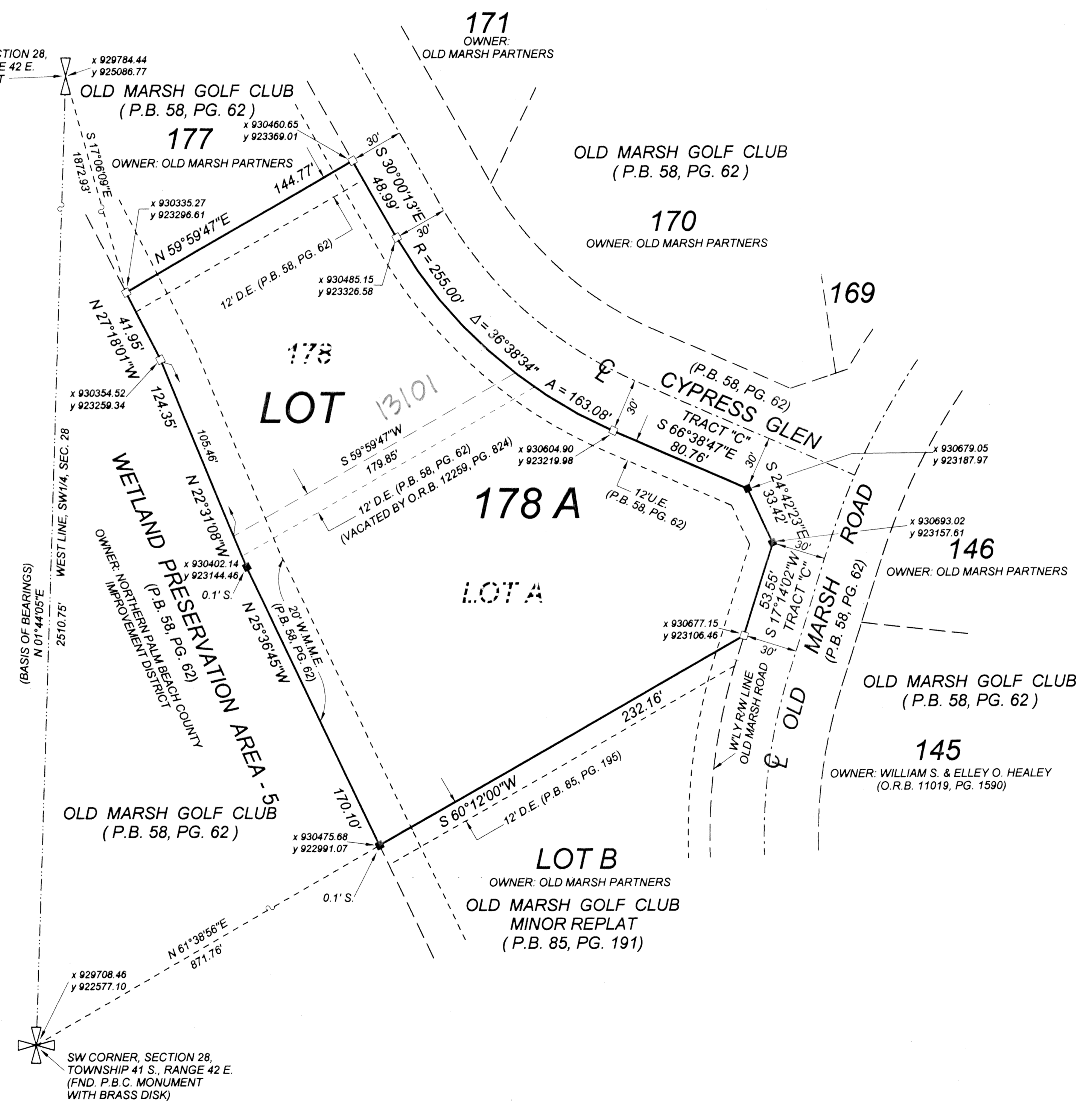
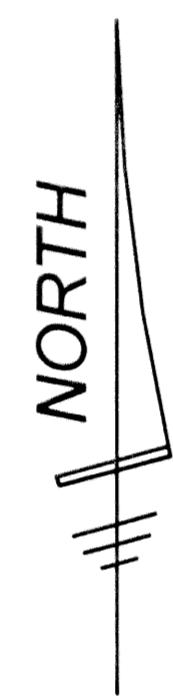
SHEET 2 OF 2



VICINITY SKETCH  
(NOT TO SCALE)

0474-009

WEST 1/4 CORNER, SECTION 28,  
TOWNSHIP 41 S., RANGE 42 E.  
(FND. P.B.C. MONUMENT  
WITH BRASS DISK)

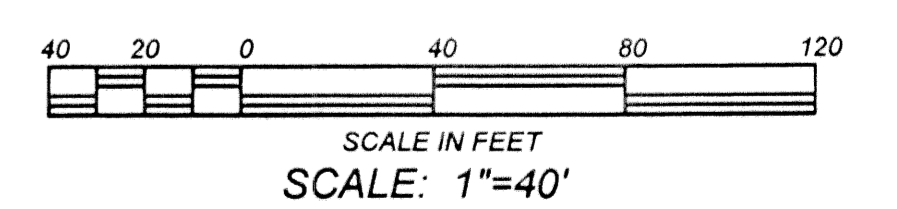


ABBREVIATIONS & SYMBOLS

- |              |   |   |
|--------------|---|---|
| 1. □         | = | Denotes set Permanent Reference Monuments (P.R.M.'s).   |
| 2. ■         | = | Stamped P.R.M. P.L.S. # 3357.   |
| 3. ⊙         | = | Denotes found Permanent Reference Monuments (P.R.M.'s)  |
| 4. ⊕         | = | Stamped P.R.M. P.L.S. #2608.  |
| 5. ⊖         | = | Centerline.   |
| 6. ⊕         | = | Right of Way  |
| 7. ⊖         | = | Plat Book.  |
| 8. ⊕         | = | Pages.  |
| 9. ⊖         | = | Section.  |
| 10. ⊕        | = | Township.   |
| 11. ⊖        | = | Range.  |
| 12. X        | = | Utility Easement.   |
| 13. Y        | = | Drainage Easement.  |
| 14. A        | = | "X coordinate", states the given position of a point (expressed in feet and decimals of a foot) in an East and West direction.  |
| 15. Δ        | = | "Y coordinate", states the given position of a point (expressed in feet and decimals of a foot) in a North and South direction. |
| 16. R        | = | Arc Length.   |
| 17. C.B.     | = | Central Angle.  |
| 18. O.R.B.   | = | Radius.   |
| 19. P.O.C.   | = | Chord Bearing.  |
| 20. P.O.B.   | = | Official Record Book.   |
| 21. P.B.C.   | = | Point of Commencement.  |
| 22. FND.     | = | Point of Beginning.   |
| 23. NPBCID   | = | Palm Beach County.  |
| 24. W.M.M.E. | = | Found.  |
|              | = | Northern Palm Beach County Improvement District   |
|              | = | Water Management Maintenance Easement   |

TABULAR DATA:

PETITION No.: PDD85-42  
TOTAL AREA: 1,544 ACRES  
TOTAL UNITS: 1  
DENSITY: 0.65 DU/AC



BEARING ROTATION EQUATION:  
N 01°44'05"E (PLAT BEARING)  
N 01°44'03"E (GRID BEARING)  
00°00'02" = COUNTER CLOCKWISE  
BEARING ROTATION  
(PLAT TO GRID)

OLD MARSH GOLF CLUB  
REPLAT No. 7 (a P.U.D.)



FIELD:	JOB No.: 99-1201	F.B.:	PG.:
OFFICE: R.C.	DATE: APRIL, 2000	DWG. No.:	99-1201
CK'D:	REF:	SHEET	2 OF 2

SUBDIVISION OLD MARSH GOLF CLUB REPL 7  
 BOOK 92 PAGE 135  
 RECORDS B PLAT BOOK 115B  
 COUNTY 42  
 SR 85-42  
 TAZ 797  
 PUD NAME OLD MARSH GOLF CLUB